



PORTAL Data System

TUTORIAL OF THE COMPLETE REDESIGN

JEN PAPOUCHIS
CQL Support Systems Specialist

CARLI FRIEDMAN, PH.D.
CQL Director Of Research

TIFFANY ZACHARAKIS
MediSked Associate Product Manager





Vision

A world of dignity, opportunity, and community for **all** people.

Mission

CQL is dedicated to the definition, measurement, and improvement of **personal** quality of life.



PORTAL Data System Background

- Originally launched in 2017
- Created to collect, analyze, and report data
 - Personal Outcome Measures®
 - Basic Assurances®
- Free access to accredited organizations
- Those who achieved CQL Certification or participated in a POM Workshop are eligible to purchase access
- Annual subscription is \$1,250



PORTAL

Thank you for
your feedback!

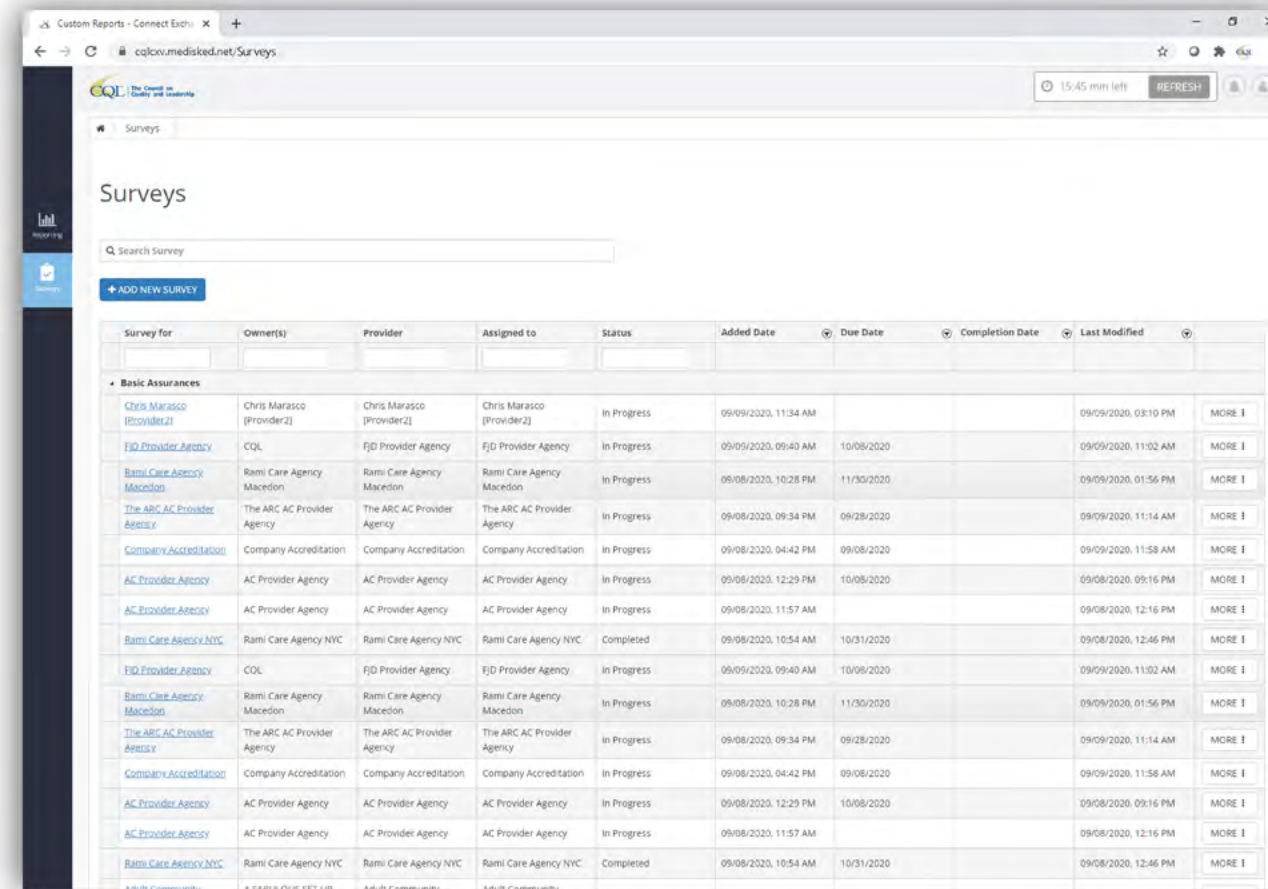




PORTAL Data System

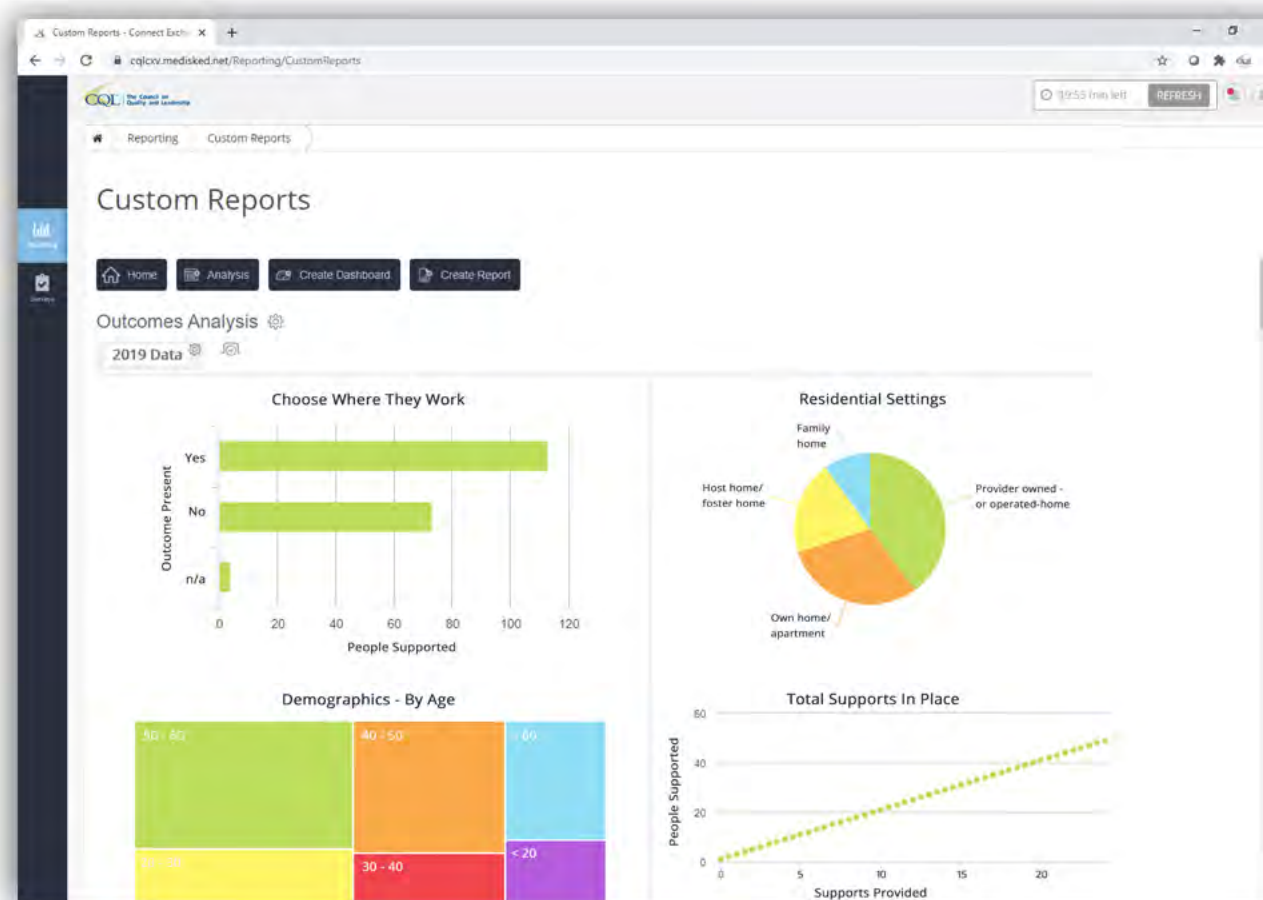
Streamlined Navigation

- Left-side menu options
 - Reporting
 - Surveys
 - Admin
- Dropdown menu options
- Action buttons
- Search, Sort, Filter functionality
- ‘Breadcrumb’ display



PORTAL Data System Enhanced Features

- Improved loading speeds
- User role controls
- Auto-save surveys
- Interactive dashboards
- Templated reports
- Drag & Drop custom report-builder



PORTAL Data System Transition Overview



- Transition started on 9.28.20 at 4 p.m. CT
- New PORTAL goes 'live' on 10.05.20
- Throughout this week, no access to PORTAL
- All data will be transferred during transition
- No existing PORTAL data will be lost in process

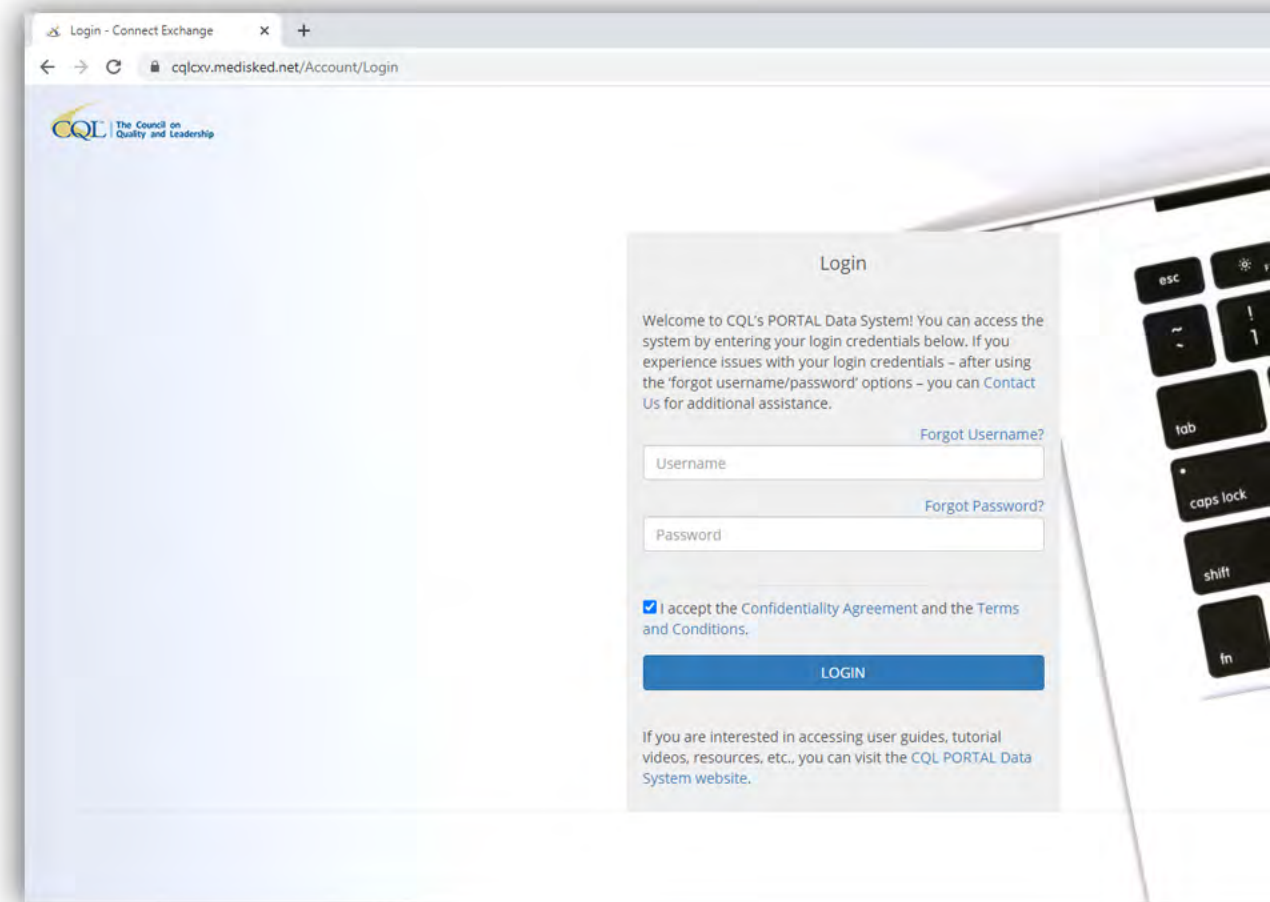


PORTAL Data System

Access The New PORTAL Data System

OCTOBER 5, 2020

1. CQL sends email confirmation
2. User confirms email address
3. Password link sent via PORTAL
4. User sets up password
5. User updates account information

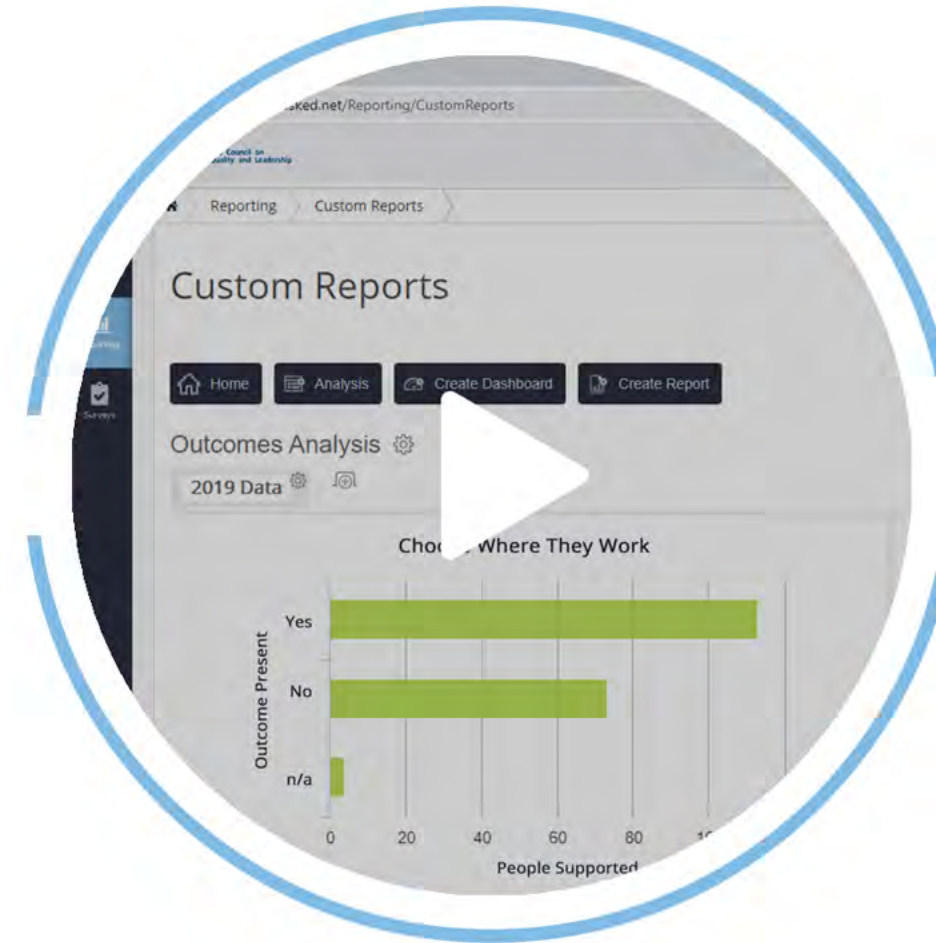


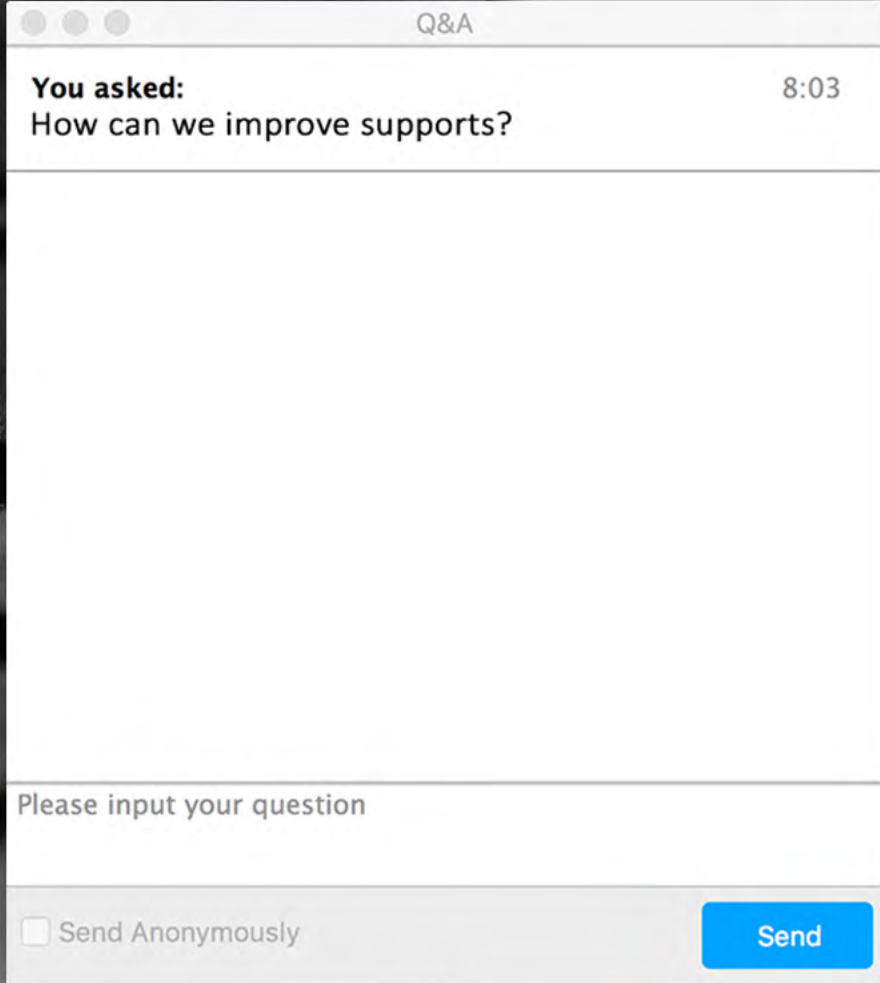


PORTAL Data System Ongoing Guidance

- User Guides
- Tutorial Videos
- PORTAL Alerts Emails
- Future Webinars
- Customized Support

www.c-q-l.org/tools/portal-data-system/





Q&A

You asked: 8:03
How can we improve supports?

Please input your question

Send Anonymously Send

Questions?

Submit questions via the
Q&A window in Zoom



Contact Us

JEN PAPOUCHIS

CQL Support Systems Specialist

CARLI FRIEDMAN, PH.D.

CQL Director Of Research

data@thecouncil.org